

Recommended Notice to Mariners- CEN 301 6-4 Par. 71

Source data: CHS File number 9001713

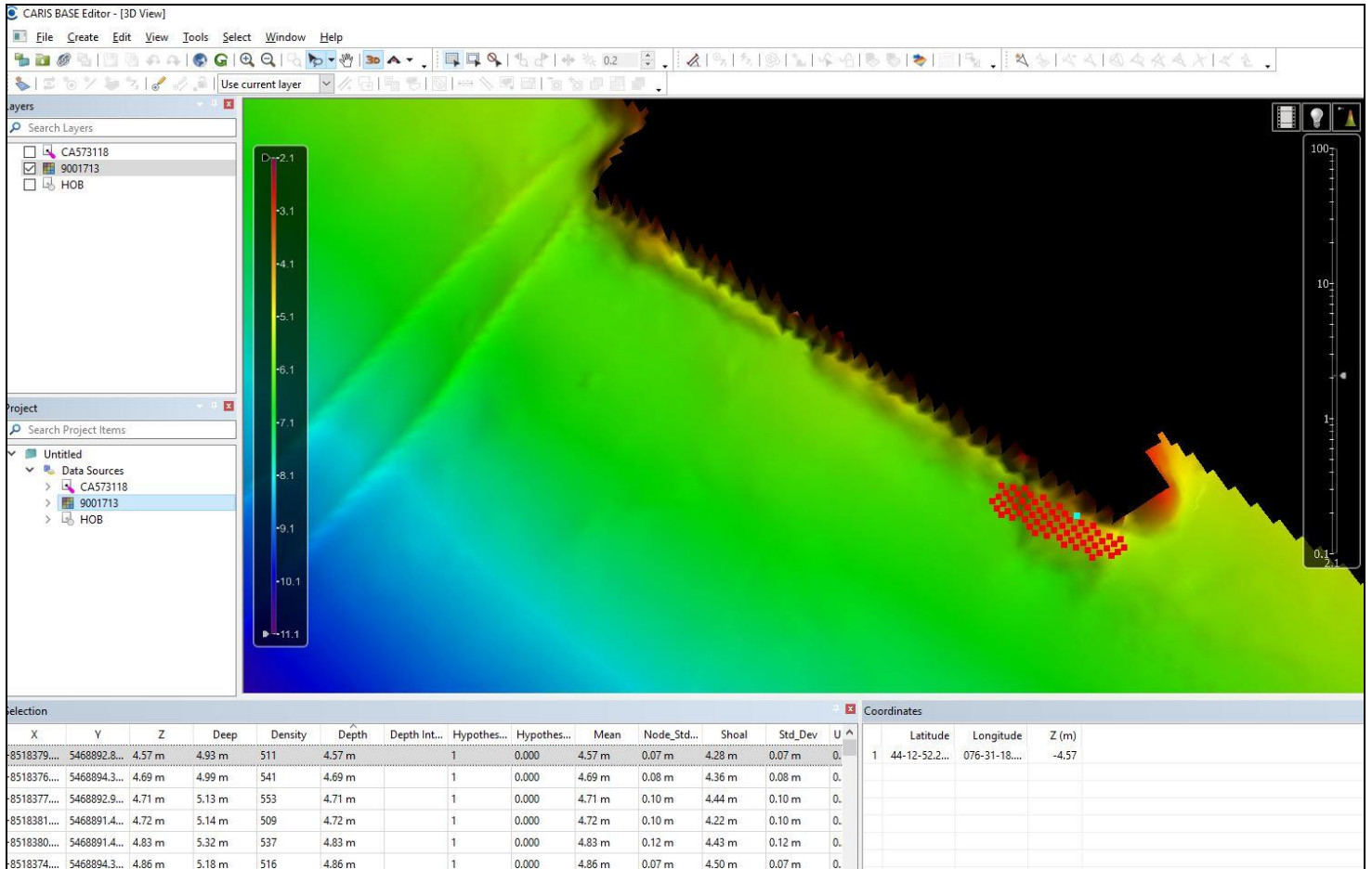
CHS Operations recently conducted a hydrographic survey on the approaches to the former Rockwood Asylum Coal Dock nearby Kingston ON at the request of The Great Lakes Cruise Association. There are plans to utilize this wharf for cruise ship traffic in the near future.

The current CHS Sailing Directions describe the dock as follows:

71 On the promontory east of *Lake Ontario Park Campground*, there is a former wharf, once used to receive coal for the heating plant at the *Kingston Psychiatric Hospital* and *Rockwood Hospital for the Insane*. Both of these facilities are long closed; the wharf has been filled in and paved over. There are no berthing facilities here.

It is recommended that CHS Sailing Directions consider the following amendment to the text:

“On the promontory east of *Lake Ontario Park Campground*, there is a wharf, once used to receive coal for a nearby heating plant. While no longer utilized to receive coal shipments, recent hydrographic surveys have found the approaches to the wharf to be clear of obstructions and a least depth of 4.6 metres is found alongside.”



Please let me know if you have any questions/concerns.

Scott Youngblut
 Engineering Project Supervisor – Hydrographer-in-Charge
 Canadian Hydrographic Service | Service Hydrographique du Canada
 Fisheries and Oceans Canada | Pêches et Océans Canada
 867 Lakeshore Road, Burlington, Ontario, Canada, L7S 1A1
 (905)630-9247 (c)
 scott.youngblut@dfo-mpo.gc.ca