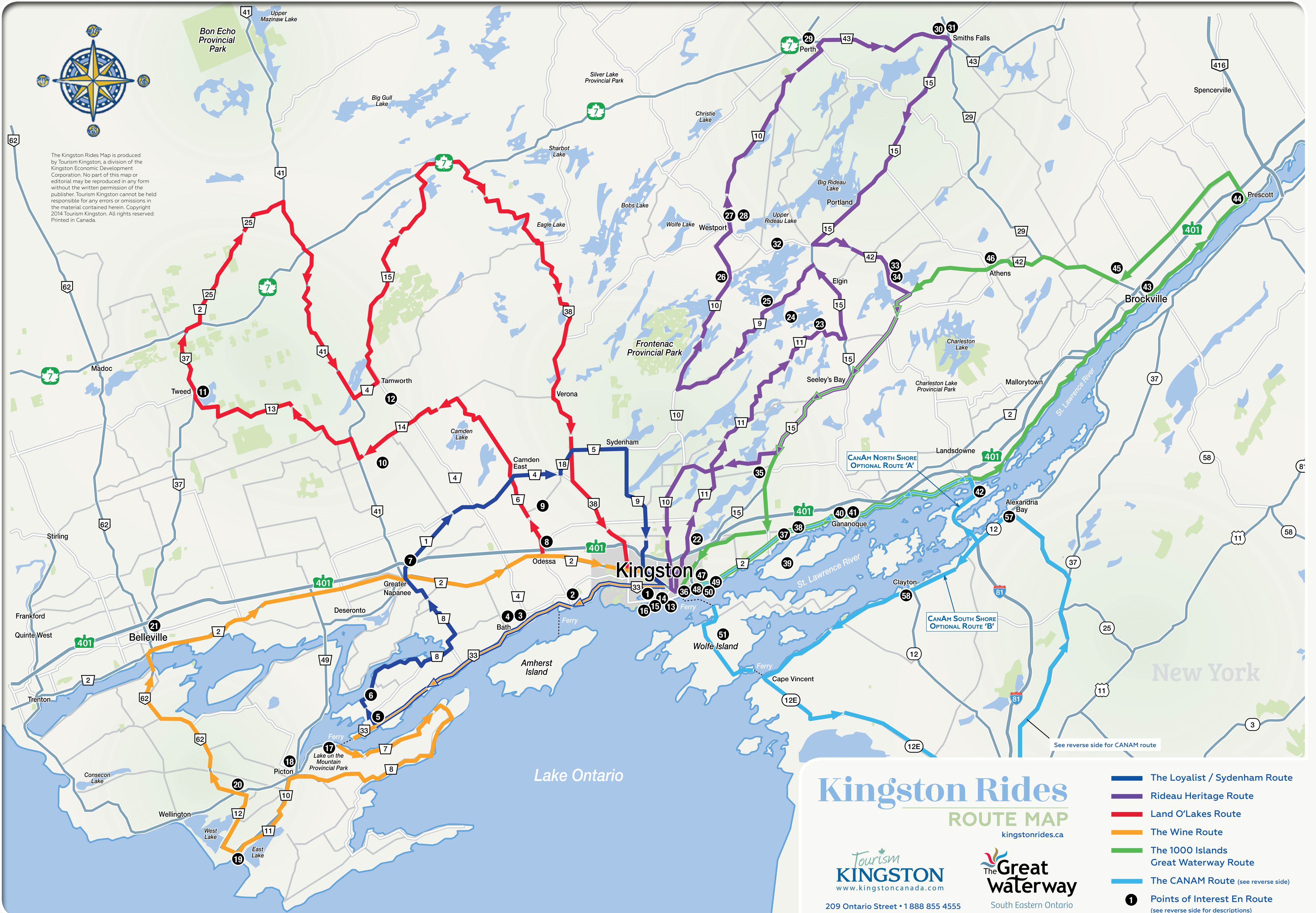




The Kingston Rides Map is produced by Tourism Kingston, a division of the Kingston Economic Development Corporation. No part of this map or editorial may be reproduced in any form without the written permission of the publisher. Tourism Kingston cannot be held responsible for any errors or omissions in the material contained herein. Copyright 2014 Tourism Kingston. All rights reserved. Printed in Canada.



Kingston Rides

ROUTE MAP

kingstonrides.ca

Tourism
KINGSTON
www.kingstoncanada.com
209 Ontario Street • 1 888 855 4555

The
**Great
waterway**
South Eastern Ontario

- The Loyalist / Sydenham Route
- Rideau Heritage Route
- Land O'Lakes Route
- The Wine Route
- The 1000 Islands Great Waterway Route
- The CANAM Route (see reverse side)
- Points of Interest En Route (see reverse side for descriptions)

Points of Interest En Route



Loyalist/Sydenham ROUTE

Take the Loyalist/Sydenham Route to enjoy the scenic tour of the City of Kingston and Loyalist Township boundary. Beginning at Kingston's Visitor Information Centre, this route ventures through the historic town of Bath and circles back through beautiful Napanee, photographic Wilton, rural Odessa and South Frontenac before returning to Kingston.

1 Collins Bay Institution

Opened in 1930, Collins Bay Institution was originally known as the "Preferred Class Penitentiary (Ontario)" until 1932. Collins Bay Institution is a medium-security facility and is the second oldest institution for federal male offenders in the Ontario region.

2 Fairfield House

The Fairfield House was built in 1793 on the shore of Lake Ontario. It is one of several wood frame houses that are still around from the Loyalist era. In 1959, the Fairfield House became the property of the Province of Ontario, which entrusted it to the St. Lawrence Parks Commission.

3 Millhaven Institution

Opened in 1971, Millhaven Institution was originally built to replace the area's other maximum security prison, Kingston Penitentiary. A riot at Kingston Penitentiary forced Millhaven to open prematurely.

4 Fairfield-Gutzeit House

The Fairfield-Gutzeit House is a Pre-Victorian Historic home, with its Georgian style architecture (built in 1796 by the Fairfield Brothers). This beautiful house is furnished in the Victorian era, with collectibles dating back 200 years or more.

5 Loyalist Landing

On June 16, 1784, a party of some 250 United Empire Loyalists landed near this site and established the first permanent European settlement in Adolphustown Township. They had sailed from New York in the fall of 1783.

6 Old Hay Bay Church

Old Hay Bay Church is a meeting house dating back to the early days of settlement in Upper Canada. This rural two-acre property and adjacent graveyard overlooks Hay Bay. The building is now operated as the Old Hay Bay Church Museum.

7 The Allan Macpherson House

The Macpherson House Museum was built by Allan Macpherson on the banks of the Napanee River in 1826, and was the first private home to the north of the river. Once run down and unrecognizable, the house has been rescued and lovingly restored to look as it did in the 1830's.

8 Babcock Mill

The historic Babcock Mill, built in 1856, is a must-see when visiting Odessa. The mill combined a woolen factory with grist, planing and saw milling operations. It has been restored as a fully operational water-powered mill and park site.



Land O'Lakes ROUTE

Take the Land O'Lakes Route through the picturesque northern views of the County of Frontenac. This tour will take you through scenic Yarker, Enterprise, Kaladar, Tamworth and Mountain Grove. The breathtaking country views are the solution to a long week in the city.

8 Babcock Mill

The historic Babcock Mill, built in 1856, is a must-see when visiting Odessa. The mill combined a woolen factory with grist, planing and saw milling operations. It has been restored as a fully operational water-powered mill and park site.

9 Wilton Cheese Factory

Founded in 1867, the Wilton Cheese Factory (WCF) is currently operated by the Jensen family, entering its third generation of artisanal cheese making. The WCF offers a wide variety of quality cheeses, with fresh curd made every Sunday, Monday, Wednesday and Friday.

10 Hell's Holes Nature Trails & Caves

Enjoy 3.2 km of self-guided trails through a gorgeous geological area of Eastern Ontario. Cross a natural stone bridge and walk through a rugged crisscrossing gorge with overhanging ledges, grottos, flowerpots, mushroom-shaped rocks, sinkholes and more.

11 Tweed & Area Heritage Centre

The Tweed & Area Heritage Centre comprises the Victorian Houston House 1897 and the annex. This is a multi-purpose facility which includes a Welcome & Information bureau, local arts and crafts galleries, Memorial Hall and more.

12 Spindletree Gardens

One of Land O'Lakes' signature attractions, Spindletree Gardens offers a series of gardens with thousands of spring bulbs, perennial walks, rose gardens, formal and informal water features and a unique walled kitchen garden.



The Wine ROUTE

Take the Wine Route for a leisurely tour through Canada's fastest growing wine region. This tour will take you through beautiful Picton, Bloomfield and the Bay of Quinte. Adjust your route to stop at one of the 30+ world class and award winning wineries for the full Prince Edward County experience.

13 Murney Tower

Murney Tower was built in 1846 on the shores of Lake Ontario as part of the defenses of Kingston. Now a National Historic Site and part of the Rideau Canal and Kingston Fortifications World Heritage Site, welcoming visitors each summer to explore this wonderful piece of Kingston heritage.

14 Bellevue House

Bellevue House was once the home of Sir John A. Macdonald, Canada's first Prime Minister. Restored to the 1840s period, and staffed by costumed interpreters, the house and gardens are kept much as they would have been during the time that Macdonald lived here with his wife and infant son.

15 Canada's Penitentiary Museum

Canada's Penitentiary Museum, the award-winning museum dedicated solely to the preservation and interpretation of the history of our federal penitentiaries. The museum is housed within the former Warden's residence of the Kingston Penitentiary.

16 Kingston Penitentiary

Officially opened on June 1, 1835, as the "Provincial Penitentiary of the Province of Upper Canada," it was one of the oldest prisons in continuous use in the world at the time of its closure. Kingston Penitentiary was one of nine federal prisons in the Kingston area.

3 Millhaven Institution

Opened in 1971, Millhaven Institution was originally built to replace the area's other maximum security prison, Kingston Penitentiary. A riot at Kingston Penitentiary forced Millhaven to open prematurely.

5 Loyalist Landing

On June 16, 1784, a party of some 250 United Empire Loyalists landed near this site and established the first permanent European settlement in Adolphustown Township. They had sailed from New York in the fall of 1783.

17 Lake on the Mountain

A natural curiosity, Lake on the Mountain is located nearly 62 metres above the Bay of Quinte. The lake has no visible water source but has a constant flow of clean, fresh water. It defies all known geographical and geological theories and stories of volcanoes, meteorites and massive glacial whirlpools abound.

18 The Crystal Palace

The Crystal Palace, built in 1887, adopted its name from the original Crystal Palace created by Sir Joseph Paxton in 1851 for the Great Exhibition in London England. The building re-opened in 1997 and remains one of the few original Crystal Palaces in the world.

19 Sandbanks Provincial Park

Sandbanks is among the largest and most beautiful beaches in Ontario, with golden sand and sparkling water. Windsurfing, sailing, canoeing and boating compete with sunbathing and swimming are favourite park activities.

20 Bloomfield

A key destination on Prince Edward County's Taste and Arts Trails, Bloomfield is where friends gather - for fine dining, cozy pubs, cafes and tearooms, wineries, antiques, handcrafted ice cream, fresh pastries, and homemade bakery goodies.

21 Glanmore House

Glanmore House, designated a National Historic Site of Canada in 1969, was built in 1882-1883 for wealthy banker J.P.C. Phillips and his wife Harriet Dougall Phillips. The grand interior features beautiful hand-painted ceilings and ornate woodwork.



Rideau Heritage ROUTE

The Rideau Heritage Route is the most scenic of Kingston's Motorcycle Tourism routes, with winding, narrow roads that take you through breathtaking cottage country and the quaint towns of Westport and Sydenham as well as Frontenac Provincial Park.

22 Kingston Mills

This is the site of the first mill built on the Rideau, the Kingston Mill, built here at Catarqui Falls in 1784. The site today features a lovely set of three locks, a turning basin, a detached upper lock and the Robert Anglin Visitor's Centre.

23 Jones Falls

One of the prettiest lock stations on the Rideau, Jones Falls is home to the "Great Stone Arch Dam." When completed in 1831, this was the highest dam in North America, a stunning feat of engineering, still very impressive to this day.

24 Davis Lock

Davis Lock is known as a "solitude lock," one of the most remote locks on the Rideau. It's named after Walter Davis Jr. who built a sawmill here in 1818. It features the best preserved example of a defensible lockmaster's house on the Rideau.

25 Chaffey's Lock

A feature of this lock is the Lockmaster's House Museum with many interpretive displays of the early days at Chaffey's. It's also worth a walk around "town" to visit the grounds of the lovely old Opinicon Resort Hotel and then head over to the restored Chaffey's Cemetery.

26 Bedford Mill

Now a private residence, the old Bedford Mill has been beautifully restored. Water power was available from the outflow of Devil Lake. This was once a centre for shipbuilding on the Rideau. Many haulage barges were built here for commercial use on the Rideau.

27 Westport

Every year thousands of people come to Westport, a tranquil village with a population of about 700, to explore its historical past, to photograph its natural beauty, discover its artistic community, or just to kick back, relax, and unwind.

28 Foley Mountain Conservation Area

Foley Mountain Conservation Area is located high atop a granite ridge overlooking the Upper Rideau lake and picturesque village of Westport, 50 km south of Perth. The Conservation Area consists of 325 hectares of mixed forests, ponds, and fields.

29 Historic Downtown Perth

Perth is a modern community with old-world charm; a living mosaic of life in rural Ontario during the 1800's. There is a great wealth of Canadian history, architecture, and culture to be found in Perth.

30 Railway Museum of Eastern Ontario

The Railway Museum is located on 10.5 acres in the heart of Smiths Falls. The station building, built in 1912 by the Canadian Northern Ontario Railway, is a National Historic Site.

31 Rideau Canal Visitor Centre

The Rideau Canal Visitor Centre is the flagship interpretation centre for the historic Rideau Canal system - a National Historic Site of Canada, a designated Canadian Heritage River, and a UNESCO World Heritage destination.

32 Newboro Lockstation

Originally called the Isthmus, this lockstation marks the watershed divide between the Rideau River watershed and the Catarqui / Gananoque rivers watersheds. Newboro also features one of the four blockhouses built for the defense of the Rideau Canal.

33 The Village of Delta and Delta Mill

The original name for Delta was Stevenstown, chosen for its founder, Baptist Clergyman Abel Stevens, a British Loyalist from Vermont, who settled in the area in 1796. It boasts many examples of beautiful 19th century architecture.

34 Lyndhurst Bridge

Reputedly the oldest bridge in existence in Ontario, this structure was built in 1856-57. A fine example of masonry arch construction, the three-span bridge was built of local field stone, and is unadorned except for the sandstone wall caps and arch surrounds.

35 Upper and Lower Brewers Mills

Used as the lockmaster's residence, the gun slits have been sealed in, but if you look closely, you can see where they were. Behind a row of cedars on the shore of the basin is "The Ark," an old, very large "houseboat," pulled up on shore many decades ago, now a private residence.



1000 Islands/Great Waterway ROUTE

Take the 1000 Islands/Great Waterway Route for a breathtaking tour of this scenic region in Eastern Ontario. This route will take you through historic communities such as Gananoque, Brockville and Athens, not to mention along the eponymous Thousand Islands Parkway.

36 The LaSalle Causeway

The LaSalle Causeway links downtown Kingston to Kingston East near the mouth of the Catarqui River. It was built in 1917 replacing the 1829 'Penny Bridge', a wooden toll bridge with a swing section to allow passage of marine vessels.

37 Grass Creek Park

Grass Creek Park is a 51 acre community park located at 2991 Highway 2. It has water frontage on both the Bateau Channel of the St. Lawrence River and along the bay at the mouth of Grass Creek.

38 MacLachlan Woodworking Museum

The MacLachlan Woodworking Museum holds the most extensive, nationally significant collection of woodworking tools in Canada. Sandy MacLachlan created the Museum in 1967 from an 1855 log house, originally built by the White family in Lanark County.

39 Howe Island

Howe Island was named after a British officer William Howe, it first appeared on a map in 1818. Today it has a population of about 600 but can swell in the summer as cottagers make their way onto the island.

40 Gananoque

Gananoque is an aboriginal name which means "town on two rivers". It has a population of just over 5,000 year-round residents, as well as summer residents sometimes referred to as "Islanders" because of the Thousand Islands.

41 Thousand Islands Railway

The Thousand Islands Railway (TIR) Engine 500, a 35-ton diesel rebuilt by CN owned-Oshawa (electric) Railway from an electric locomotive. Originally three miles long, the TIR connected Gananoque, on the St. Lawrence River with the Grand Trunk Railway of Canada's Montreal-Toronto main line.

42 The 1000 Islands Tower

The 1000 Islands Tower is a unique tourist attraction, the only one of its kind in the 1000 Islands. The observation deck provides visitors with a spectacular panoramic view of the 1000 Islands and St. Lawrence River.

43 Fulford Place Museum

A visit to Brockville is a must, including a stop at the historic Fulford Place Museum. It's the early 20th century mansion home of Senator George Taylor Fulford. It was designated a National Historic Site of Canada in 1992.

44 Fort Wellington

Fort Wellington was built during the War of 1812 to defend the St. Lawrence River shipping route from possible attack by the United States. The Department of the Interior reopened the fort in 1923 to the public as a historic site.

45 Mac Johnson Wildlife Area

The Mac Johnson Wildlife Area includes 532 hectares of wetland, field and forest. There are 11 kilometres of trails that cross woodland, wetland and field areas.

46 Athens

Athens is a lively town dating back to the early 1800's, and is definitely worth an afternoon of visiting the local stores and looking at the murals. Athens murals are famous and another 'must see' attractions.

34 Lyndhurst Bridge

Reputedly the oldest bridge in existence in Ontario, this structure was built in 1856-57. It is distinguished by the curved flare of its end walls and by the slightly oblique shape of two of its arches.

35 Upper and Lower Brewers Mills

One of the four remaining timber swing bridges on the Rideau, this beautiful swing bridge is so well balanced that one person can swing it by simply pushing on it.

47 Barriefield Rock Garden

Envisioned and championed by Bill Robb, the Barriefield Rock Garden is intended to be a grand entrance into the city, combining beautiful views of the historic waterfront, Fort Henry, the lake and the river.



The Can Am ROUTE

DON'T FORGET YOUR PASSPORT!

48 The Royal Military College of Canada (RMCC)

RMCC was established in 1876 and is the military college of the Canadian Forces. Located on Point Frederick, the college is a blend of older, historic buildings and modern academic, athletic and dormitory facilities.

49 Fort Henry National Historic Site of Canada

Construction of Fort Henry by the British military began in 1832. It was garrisoned by the British Army until 1870, and then by the Canadian Forces. Although Fort Henry has never seen military action, it was used as a prison for combatants captured during war.

50 The Martello Towers

Shoal Tower, in front of City Hall was built in 1847 to reinforce Kingston's existing defense system in case of American attack. Cathcart Tower on Cedar Island was also one of four Martello towers representing part of the Kingston defense works.

51 Wolfe Island

Renamed Wolfe Island in honour of General James Wolfe in 1792. Wolfe Island is twenty miles in length and ranges from one to seven miles in breadth; a fertile island of over 30,000 acres in area. It is the largest of the famed "Thousand Islands."

52 Sackets Harbor and Sackets Harbor Battletield

The community was named after Augustus Sacket, a New York City lawyer who settled the area and founded the village in 1801. Following the outbreak of the war of 1812, it became the center of American naval and military activity for the upper St. Lawrence Valley and Lake Ontario.

53 Fort Ontario Historic Site

The first fortification built by the British in 1755 was named "The Fort of the Six Nations". It was an eight-pointed wooden stockade, with swivel cannons, effective only against small bodies of attacking troops.

54 Fort Brewerton

Fort Brewerton was constructed in 1759 after the fall of Fort Niagara. The fort was constructed to protect the river trade route between the Great Lakes and Albany. The reconstructed Blockhouse houses the Fort Brewerton Historical Society's Museum.

55 Jefferson County Historical Society Museum

The Jefferson County Historical Society Museum is housed in the historic Paddock Mansion in downtown Watertown, New York. Listed on the National Register of Historic Places in 1979, it was formerly the home of local banker Edwin L. Paddock and his wife, Olive (Wheeler).

56 The New York State Zoo

Located at Thompson Park the zoo strives to be a premier zoological park focused on conservation, education, scientific study, and recreation. It is the only zoo in the world to exhibit species native to New York State.

57 Alexandria Bay

Alexandria Bay and the 1000 Islands Region are an international destination for a wide variety of visitors. The Alexandria Bay area has maintained their original quaint characteristics. From here you can visit Boldt Castle and Singer Castle located in the 1000 Islands.

NORTH SHORE OPTION 'A'

40 Gananoque

Gananoque, an aboriginal name which means "town on two rivers" has a population of just over 5,000 year-round residents, as well as many summer residents because of the 1000 Islands, Gananoque's most important tourist attraction.

41 Thousand Islands Railway

Thousand Islands Railway (TIR) Engine 500, a 35-ton diesel rebuilt by CN owned-Oshawa Railway from an electric locomotive. Originally three miles long, the TIR connected Gananoque, Ontario, on the St. Lawrence River with Canada's Montreal-Toronto main line.

39 Howe Island

Howe Island was named after a British officer named William Howe, it appeared on a map in 1818. Today it has a population of about 600 but can swell in summer as cottagers make their way onto the island.

37 Grass Creek Park

Grass Creek Park is a 51-acre regional park for major cultural events. It contains a very active sand beach, picnic areas, play equipment, a pavilion, parking, washrooms, boat launch, open fields, rolling hills, and trees.

38 MacLachlan Woodworking Museum

The MacLachlan Woodworking Museum holds the most extensive, nationally significant collection of woodworking tools in Canada. Sandy MacLachlan created the Museum in 1967 from an 1855 log house, originally built by the White family in Lanark County, to house the collection.

36 The LaSalle Causeway

The first permanent crossing was a cable ferry built in 1786. In 1829 a 'Penny Bridge', a wooden toll bridge with a swing section was built. The LaSalle Causeway, built in 1917 was a draw bridge allowing larger vessels to pass through.

SOUTH SHORE OPTION 'B'

58 The Antique Boat Museum

This Antique Boat Museum (ABM) is the premier fresh water nautical museum in North America. The ABM's galleries overflow with over 300 unique and beautifully preserved boats and thousands of recreational boating artifacts.

Proudly sponsored by:
VIA Rail Canada

